

Base Hexagon Tile

Type De Produit	Dalles De Moquette
Collection	Configure
Numéro Du Style	5T159
Construction	Tufté Bouclé Rasé Structuré à Motif
Fibre	Ecosolution Q100™ Nylon
Méthode De Coloration	100% Solution Teinte
Sous-couche Primaire	Synthétique
Sous-couche Secondaire	Dalle Ecoworx®
Traitements Protecteurs	SSP® Shaw Protection Du Sol
Adhésif Recommandé	LokDots, 3000 Carpet Tile 1 Gallon, 4151 Multi-Use Carpet Tile 4 Gallon, 5000 Carpet Tile 1 Gallon, LokWorx Adhesive Tabs, 3800 Indoor Outdoor Carpet Tile 4 Gallon, 5000 Carpet Tile 4 Gallon or 3000 Carpet Tile 4 Gallon

	u.s.	metric
Dimensions Du Produit	28.8 in x 24.9 in	73.2 cm x 63.2 cm
Surface Par Carton	44.89 ft²	4.17 m²
Pièces Par Carton	12 pcs	
Jauge	1/12 in	47.2 per 10 cm
Points	9.0 per in	35.0 per 10 cm
Densité Moyenne	10,065 oz/yd(3)	0.372 g/cm³
Kilotex		15.07
Epaisseur Du Velours	0.244 in	6.2 mm
Poids Tufté	26 oz/yd²	881.5 g/m²



Méthodes d'Installation Conseillées

Monolithic

Random

Diagonal

Données + Tests Et Essai

Panneau Rayonnant (Astm E648)	Class I
Nbs Smoke	Less Than 450
Propension Électrostatique	Less Than 3.5 kv
Label Cri Green Label Plus (Glp)	GLP9968
Test d'Inflammabilité	Pass*
Ada Compliance	>0.6, Meets the recommended static coefficient of friction for ADA walking surfaces and accessible routes***

Test Reports may be included or listed by the manufacturing/inventory style number as opposed to the noted selling style number.

Garanties

Durée De Vie Commerciale Limitée

Coordination Des Produits

Carpet Tile: **Plane Hexagon Tile, Contact Hexagon Tile, Color Shift Hexagon Tile**

Attributs + Certifications

Certifications Below Apply Exclusively To The Carpet Tile Rug Itself And Not The Lokworx Tabs Adhesive

Certification Cradle to Cradle™ (C2C)	Silver Level (Version 4.0)
Déclaration sanitaire de produit (HPD)	Transparence 1 000 ppm
Déclaration environnementale de produit (EPD)	Certifié Par Un Organisme Tiers Conformément Aux Normes ISO14044, ISO 14025 & EN15804
Embodied Carbon (Cradle to Gate)	5.1 kg CO₂/m²
Life-Cycle Carbon Emissions	Carbon Neutral
Living Building Challenge (LBC)	Free of Red List Chemicals
Déclarer	LBC Compliant
NSF 140	or
CRI Green Label Plus (GLP)	GLP9968
Singapore Green Label	Certifié
Label CE (EN 14041)	Certifié Par Un Organisme Tiers
garantie environnementale	Re[turn] Reclamation Program* Through Our Environmental Guarantee, Shaw Pledges to Transport And Recycle Any Ecoworx Carpet.
contenu recyclé total	62% (Pre-Consumer 62% Post-Consumer 0%)
emballage du produit	100% Recyclable
pays d'origine	USA

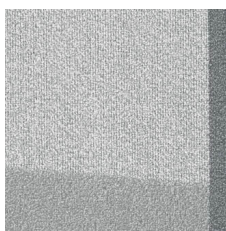
Contribution À La Certification Leed

MR Credit: Building Product Disclosure and Optimisation Environmental Product Declarations - Option 1: Environmental Product Declaration (EPD)	3rd Party Certified in Accordance with ISO14044, ISO14025 & EN15804
MR Credit: Building Product Disclosure and Optimisation Material Ingredients - Option 1: Material Ingredient Reporting	C2C Silver Level (Version 4.0) or HPD (Version 2.1)
MR Credit: Building Product Disclosure and Optimisation Material Ingredients - Option 2: Material Ingredient Optimization	C2C Silver Level (Version 4.0)
MR Credit: Building Product Disclosure and Optimization Sourcing of Raw Materials - Option 2: Leadership Extraction Practices	Environmental Guarantee: Re[turn] Reclamation Program* Through Our Environmental Guarantee, Shaw Pledges to Transport And Recycle Any Ecoworx Carpet.
"Crédit EQ : matériaux faibles émissions Option 1 : calculs par catégorie de produit"	Certified
MR Credit: Interiors Life-Cycle Impact Reduction Option 3: Design for Flexibility	Ecoworx Tile with Lokdots Installation System

Indice De Réflexion Lumineuse



Shift 59104
LRV 12.2



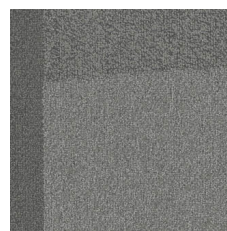
Scale 59501
LRV 28.8



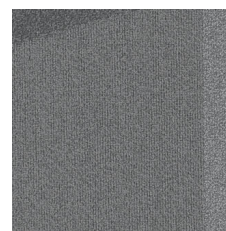
Form 59505
LRV 4.7



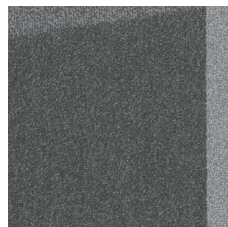
Interact 59506
LRV 3.4



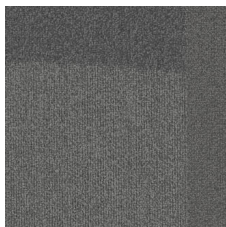
Proportion 59518
LRV 12



Progression 59580
LRV 13.1



Connect 59581
LRV 8.7



Dialogue 59596
LRV 7.1



Spatial 59597
LRV 6

Informations Supplémentaires

* To learn more about the recyclability of our products and our re[TURN], please visit shawcontract.com/sustainability.

**Meets or exceeds all local and national regulations in country of manufacture.

***This carpet is manufactured to be ADA compliant, but to be fully ADA compliant, the end-user must ensure the carpet is adhered to the floor and installed as outlined in the ADA standards.

[Installation Guidelines](#)

[Maintenance Guidelines](#)

Specifications are subject to nominal manufacturing variance. Material supply and/or manufacturing processes may necessitate changes without notice.

This product is an exclusive design and may not be duplicated in any manner. Use of this design in the creation of another product design is also strictly prohibited.

Visit shawcontract.com/testing for more information.



PVC-Free

Corporate Headquarters +1 800 257 7429 | +1 706 532 7984 | Atlanta +1 404 853 7429 | Bengaluru +91 80 6773 0202 | Beijing +86 10 6568 588 | Chicago +1 312 467 1331 | Dubai +971 4 584 6956 | Hong Kong +852 2623 0371 | Latin America (Miami) +1 305 827 5912 | London +44 207 961 4120 | Los Angeles +1 800 233 1614 | Melbourne +61 3 9939 8543 | Mexico City +55 5010 7600 | Mumbai +91 22 6284 5050 | Nantong +86 400 800 7429 | New York +1 212 953 7429 | Paris +33 (0) 1 81 22 44 39 | San Francisco +1 415 955 1920 | Santiago +562 2431 5000 x 550 | São Paulo +55 11 3071 1702 | Shanghai +86 21 3338 4000 | Singapore +65 6733 1811 | Sydney +1 800 556 302